

How to Properly Identify the Engine/Engine Family to Ensure You Are Looking-Up the Correct Gasket Set

In some instances, the engine/engine family may determine the type of gasket set that you need to order and install.

It is recommended to always check the Vehicle Emission Control Information (VECI) decal to help you identify this prior to starting the part look-up.

These steps will help ensure that you are ordering the proper Fel-Pro® gasket set for the repair occasion.

VEHICLE EMISSION CONTROL INFORMATION (VECI) DECAL

The VECI decal placement and format may vary by manufacturer. The decal includes the details regarding the engine type and emissions system installed on the vehicle.

The decal is usually found in a few different locations on the vehicle.

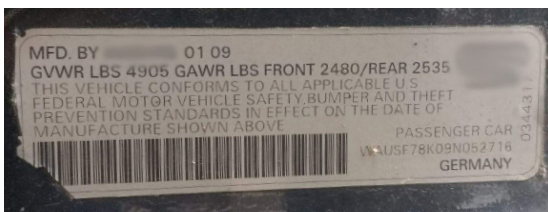
In some instances, you may also be able to use the VIN number which is located at the base of the windshield on the driver's side of the vehicle as well as in the door jamb area of the driver's door. The VIN number can be decoded to provide the year and engine code. The door jamb sticker will have the date the vehicle was manufactured along with the gross vehicle weight (GVW). Sometimes there are breaks during the model year which may require a different gasket set. Some trucks come in different GVW and may require different gasket sets.

You can find the decal with this information in a few different locations on the vehicle. Typical areas to find this information:

- Underhood
- Strut Tower
- Radiator Shroud
- Door Jamb

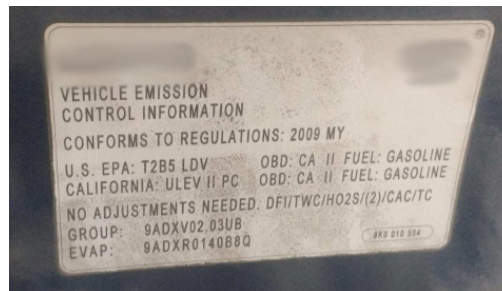
PLACEMENT VARIES BY MANUFACTURER

Door Jamb Example



PLACEMENT VARIES BY MANUFACTURER

Underhood Examples



Strut Tower Example



Radiator Shroud Examples

